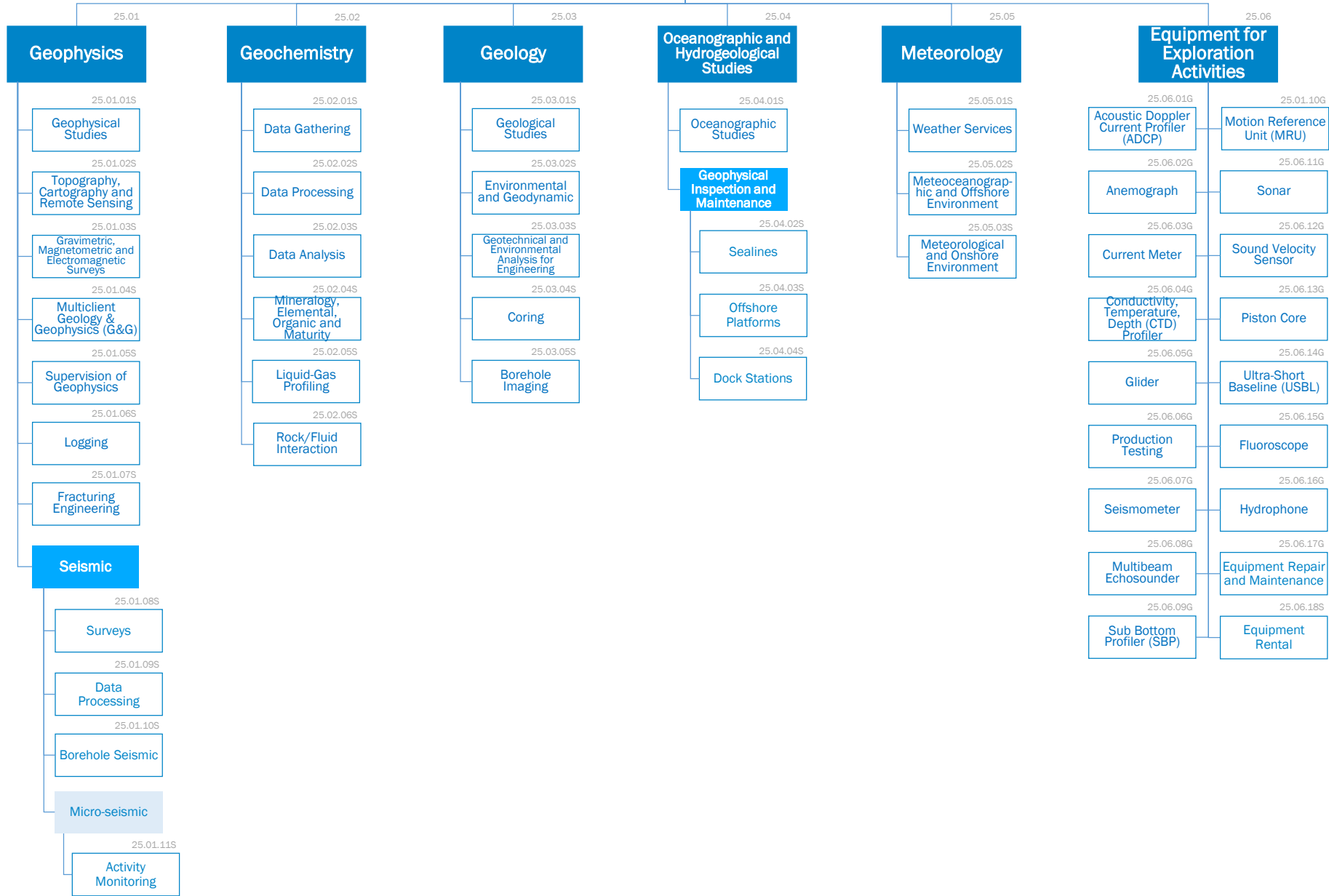


Exploration



This Group covers activities and materials used for Exploration and Reservoir Management to assess key characteristics of a field as well as to efficiently manage it.

The first families refer to the exploration and development phases, while Reservoir Management covers the most relevant activities during the production phase.

The “Equipment for Exploration” family is meant to capture the most critical and strategic equipment needed notwithstanding the exploration method.

Exploration

MAIN RATIONALES BEHIND THE STANDARD CATEGORIZATION

Geophysics

- This family encompasses all activities related to field appraisal in the exploration and development phases. These activities are mostly carried out by contractors.
- “Geophysical Studies” principally refers to acquisition and processing of seismic data (e.g. Processing data to generate interpreted images of the subsurface).
- Seismic explorations are most often used and entail the collaboration of specialized professionals. They include all activities to collect information on composition, fluids, extension and geometry of the underground layers of rock. 2D, 3D, and the more complex 4D techniques are all considered under the seismic category.

Geochemistry

- This family encompasses all exploration studies that entail the use of tools and principles of chemistry to explain geological phenomena. In particular we refer here to exploration geochemistry that includes applications to environmental, hydrological and mineral exploration studies.

Geology

- This family represents all activities of systematic investigation of the geology beneath a given piece of ground for the purpose of creating a geological map or model for a reservoir or other site.
- “Geological Studies” include traditional walk-over survey, studying outcrops and landforms, and intrusive methods (such as hand augering and machine-driven boreholes).

Oceanographic and Hydrogeological Studies

- This family includes all studies related to the physical and biological aspects of the ocean and of the seabed during the exploration phase.
- “Geophysical Inspection and Maintenance” is listed under this family rather than under “Geophysics” as it entails specific skills related to ocean and sea water dynamics.

Meteorology

- This family includes all weather and ocean forecasts that are essential to making informed decisions about day to day operations, shipping and aircraft movements, and construction or maintenance work.

Equipment for Exploration Activities

- This family includes all equipment employed in exploration activities.
- AUVs are not included in this family and are instead listed under “Subsea Remote Activities” (23.03).
- Software systems are classified under IT Software (41.03).