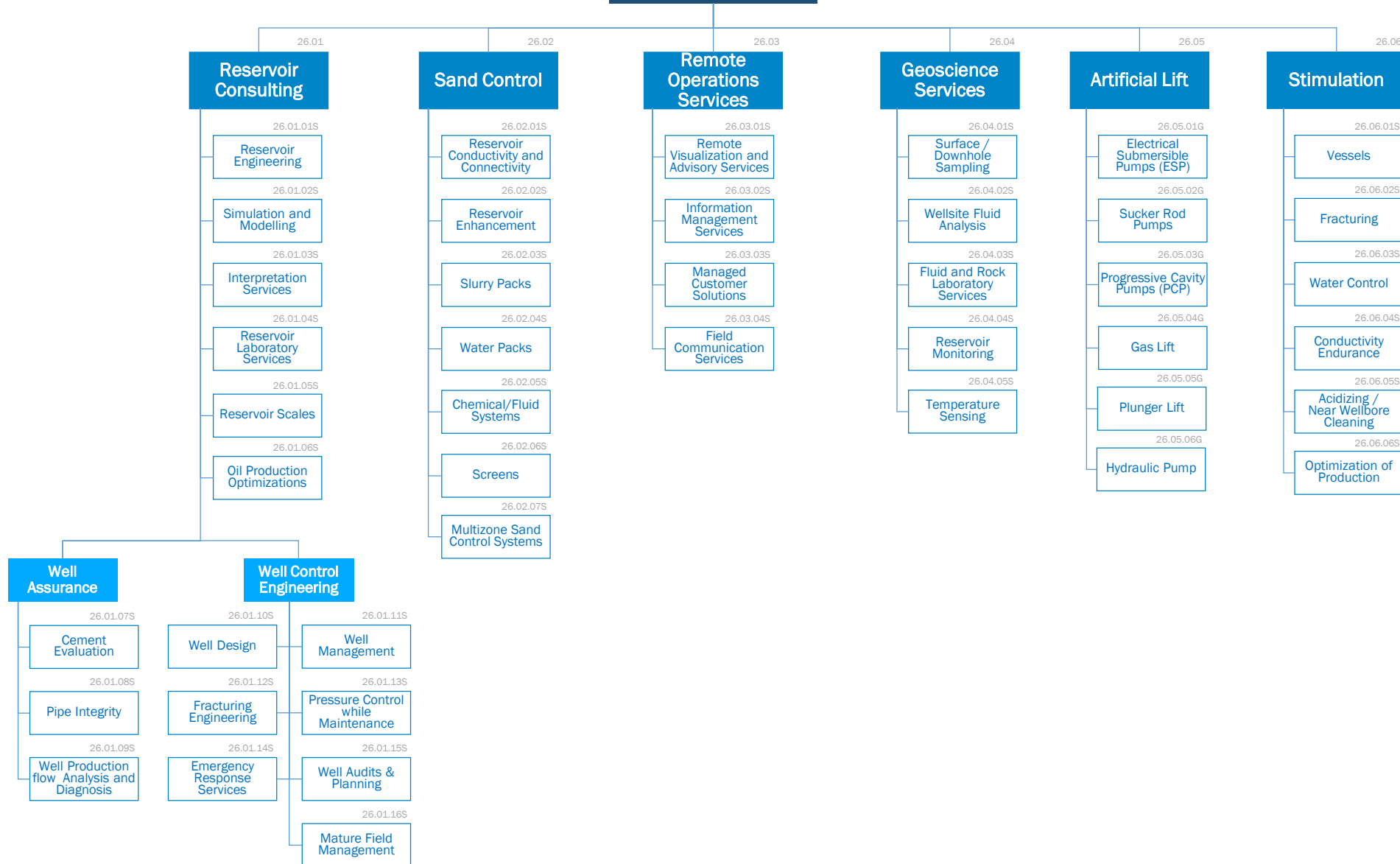


Reservoir Management



Reservoir Management

This category groups includes all services used during the operations of production, decay and abandonment of a reservoir, annexed activities as well as equipment rental or selling.

Products and services related to previous stages than production can be found in groups 25 (Exploration), 27(Drilling Equipment) 28(Drilling Services) and 29 (Well Completion).

MAIN RATIONALES BEHIND THE STANDARD CATEGORIZATION

Reservoir Consulting

- Refers to the group of services that monitor and analyse the reservoir during its life.
- “Reservoir Engineering” Includes activities such as completions and production engineering.
- “Well production analysis and Diagnosis” Includes well control assessment activity.

Geoscience Services

- Refers to the services that analyse the reservoir conditions during its productive life.

Sand and wax Control

- During the production phase and according to the characteristics of the reservoir, it is possible to find precipitates that can cause problems to the extraction pipes and equipment, these sands and waxes must be controlled through the categories in this family

Artificial Lift

- Refers to the goods provided to when it is needed additional pressure to extract fluids from a reservoir.
- “Electrical Submersible Pumps”, “Sucker Rod Pumps” and “Progressive Cavity Pumps” are separated from the Group 08 “Pumps” due to the specificity of this pumps for increasing flow of liquids from a production well

Remote Operations Services

- The services typically provided by the “Artificial lift” Suppliers to monitor and control online the features of the device in the bottom of the well.

Stimulation

- Refers to the activities performed to improve the fluid production rate of a well / reservoir.